

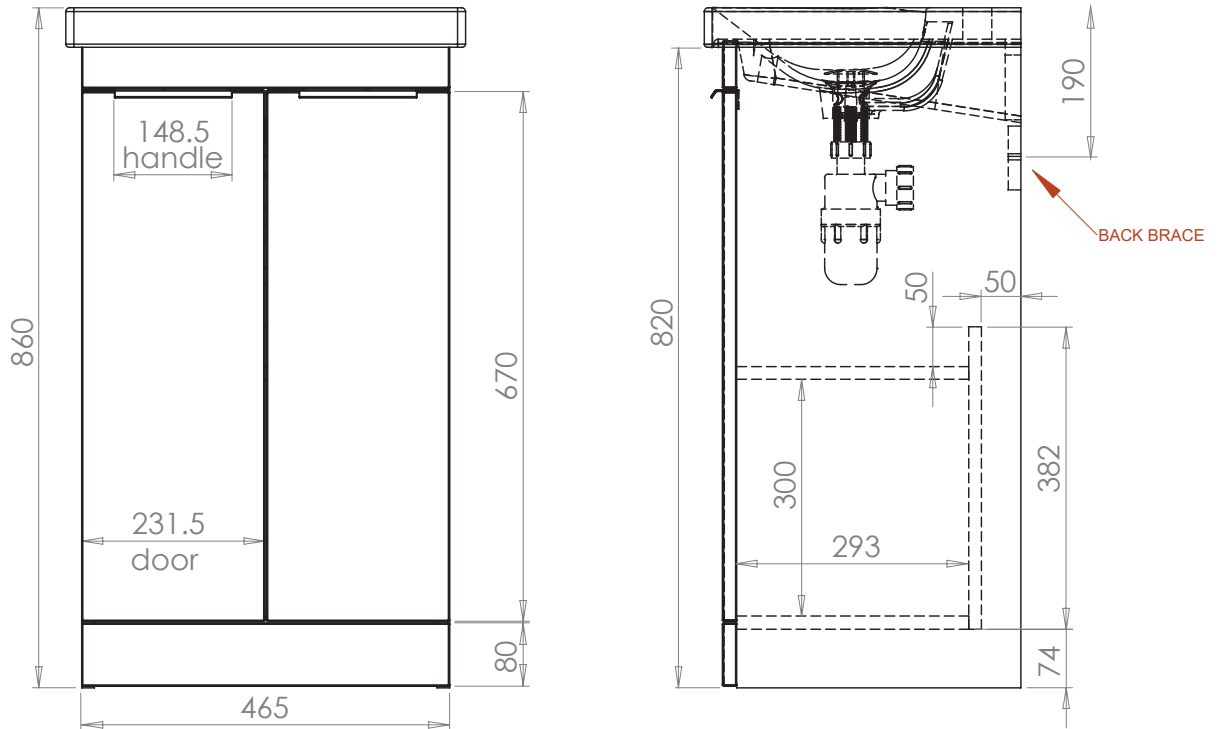
Technical Data Sheet

TYPE 500mm Floor Mounted 2 Door Unit

Whats in the box: 1x TY5010.X + Fixings



*Reference basin TDS for further info



Diagrams not to scale
All dimensions in mm
tolerance of +/-5mm

Materials

Carcass: 16mm Painted MDF or MFC
Fascia Components: 18mm Painted MDF or MFC

**Dimensions are subject to change, customers are advised to measure actual product before commencing installation.
***Fixing point dimensions are for guidance only/the positions of wall fixing must be checked when product is received.

FAQs

- | | |
|---------------------------------------------------------------|-----------------------------------------------------------------------------------|
| Q: How big is the plumbing void at the back of the furniture? | A: 50mm |
| Q: Are the handles fitted? | A: Yes, handles are pre-fitted |
| Q: Are the hinges soft close? | A: The hinges are both soft close and quick release. |
| Q: Can the doors be adjusted? | A: The doors of the unit can be adjusted as detailed in the supplied instructions |
| Q: How deep is the unit when the doors are fully open? | A: Approx. 595mm including handle. (approx 90 degree opening) |
| Q: Is the shelf removable? | A: No, There is one fixed shelf. |

NOTE: Colours unique to Roper Rhodes - No RAL Code available